

# Pitch Diameters – Straight Pipe Gages

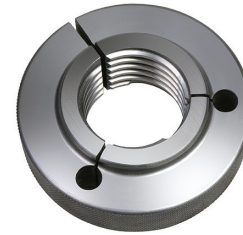


Table VI

PIPE SIZE	MEMBER	PITCH DIAMETERS FOR STRAIGHT PIPE GAGES						
		THREAD PLUG GAGES					THREAD RING GAGES	
		NPSF	NPSI	NPSL	NPSC	NPSM-2B	NPSM-2A	NPSL
1/16-27	Go	.2768	.2791					
	No Go	.2803	.2826					
1/8-27	Go	.3692	.3715	.3863	.3701	.3736	.3725	.3840
	No Go	.3727	.3750	.3898	.3771	.3783	.3689	.3805
1/4-18	Go	.4852	.4886	.5073	.4864	.4916	.4903	.5038
	No Go	.4904	.4938	.5125	.4968	.4974	.4859	.4986
3/8-18	Go	.6205	.6240	.6444	.6218	.6270	.6256	.6409
	No Go	.6257	.6292	.6496	.6322	.6329	.6211	.6357
1/2-14	Go	.7700	.7745	.8008	.7717	.7784	.7769	.7963
	No Go	.7767	.7812	.8075	.7851	.7851	.7718	.7896
3/4-14	Go	.9805	.9850	1.0112	.9822	.9889	.9873	1.0067
	No Go	.9872	.9917	1.0179	.9956	.9958	.9820	1.0000
1"-11 1/2	Go	1.2284	1.2338	1.2658	1.2305	1.2386	1.2369	1.2604
	No Go	1.2365	1.2420	1.2739	1.2468	1.2462	1.2311	1.2523
1 1/4-11 1/2	Go			1.6106	1.5752	1.5834	1.5816	1.6051
	No Go			1.6187	1.5915	1.5912	1.5756	1.5970
1 1/2-11 1/2	Go			1.8495	1.8142	1.8223	1.8205	1.8441
	No Go			1.8576	1.8305	1.8302	1.8144	1.8360
2"-11 1/2	Go			2.3234	2.2881	2.2963	2.2944	2.3180
	No Go			2.3315	2.3044	2.3044	2.2882	2.3099

**NPSM–National Pipe Straight Mechanical**–These external and internal threads are intended for free-fitting mechanical joints where there are no internal pressures. The product is gaged with straight Go and No Go plug and ring gages.

**NPSL–National Pipe Straight Locknut**–These external and internal threads are intended to produce a thread having the largest diameter that is possible to cut on standard pipe. The product is gaged with straight Go and No Go plug and ring gages.

**NH–National Fire-Hose Coupling Threads**–These external and internal threads are intended for fire hose, garden hose, chemical engine and booster hose. The product is gaged with straight Go and No Go plug and ring gages.

**NPSH–National Hose Coupling Threads**–These external and internal threads are intended for steam, air, water, and all other hose connections to be made up with standard pipe threads. The product is gaged with straight Go and No Go plug and ring gages.

**NPSC–National Pipe Straight Coupling**–These internal threads are intended to form low pressure tight joints when assembled with NPT external threads by using a sealer. The product may be gaged with a NPT plug gage or with straight Go and No Go plug gages.

**NPSF–Dryseal American Standard Fuel**–These internal threads are intended for use in soft or ductile materials for assembly with NPTF external threads without using a sealer. The product may be gaged with NPTF-LI basic notch plug gage or with straight Go and No Go plug gages.

**NPSI–Dryseal American Standard Intermediate**–These internal threads are intended for use in hard or brittle materials for assembly with PTF-SAE short external threads but may also be assembled with full length NPTF external threads. The product may be gaged with a NPTF-LI basic notch plug gage or with straight Go and No Go plug gages.

**NOTE:** NPSM and NPSF Series Gages are available from stock.